



FIT | TestSpec

Module Documentation

Alcea Technologies Inc.  
**[www.FitTrackingSolutions.com](http://www.FitTrackingSolutions.com)**

© 2006. Alcea Technologies Inc. All rights reserved. Revision 1.0  
Information in this document is subject to change without notice. Alcea Technologies Inc. and the Alcea Technologies Inc. and FIT logos are trademarks of Alcea Technologies, Inc. Windows® is a registered trademark of Microsoft Corporation. All other trademarks are the property of their respective owners. The software described in this document is furnished under a license agreement or nondisclosure agreement. The software may be used or copied only in accordance with the terms of those agreements. The contents of this manual and accompanying software are protected by copyright. No part of this publication may be reproduced, stored in a retrieval system, or transmitted, in any form or by any means, electronic, mechanical, recording, or otherwise without the written consent of Alcea Technologies Inc.

FIT TestSpec Module Documentation .....	4
Project List .....	5
Test Run List .....	7
Projects .....	8
Modules .....	9
Test Cases/Steps .....	11
Test Runs .....	13
Working with an Active Test Run .....	14
Reports .....	16
Generate Document .....	17
Test Result Administration .....	18

# FIT TestSpec Module Documentation

The FIT | TestSpec module integrates with the FIT | BugTrack template to offer a quick, efficient, and cost effective method for tracking Test Cases and their execution. This module ensures consistency between test runs regardless of who is doing the testing, and when the test is being run. TestSpec eliminates the need for bulky and cumbersome spreadsheets or word documents to track Test Case definitions and executions. All data is stored in a central repository which allows data generated by various teams to be maintained in a coordinated environment.

FIT | TestSpec is a test case management tool that controls and documents the test specification process. TestSpec allows you to define independent sets of test cases for multiple projects and then documents the results of test runs executed by the testing team. This gives you an accurate and up to date repository of information which is stored on a central server and available to all appropriate users. In addition, this module is built on top of the bug tracking template of FIT, Alcea's web-based defect tracking tool. This combines the test specification process together with Alcea's proven defect management process for a complete package for all quality assurance and testing specialists.

The test execution process is broken down into test cases for each project. Each test case is then broken down further into test steps which are executed as Test Runs. As a tester creates and activates a test run, they can step through the test cases and input the results of the executions as a Test Result. These results are then stored for future reference and are available to the reporting feature.

When problems are discovered during a test run, defects that are linked to specific Test Cases can be entered into the FIT defect tracking system. Once in the tracking system, the defect issue can be assigned to the appropriate user and all changes are tracked while the defect is being resolved. After entering a defect encountered during the execution of a test case, the user is returned to TestSpec so they can continue their testing. The two systems work together and users can toggle between the two interfaces at will.

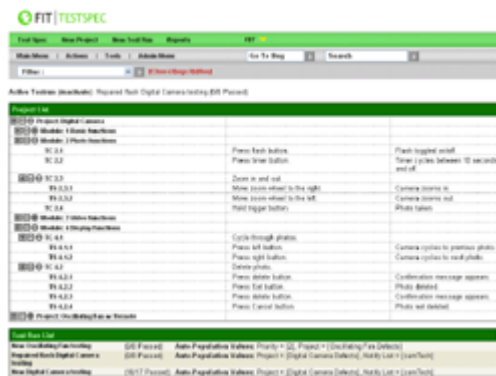
# Project List

The first time you visit the FTS main menu, the Project List will be empty. Use the "New Project" button, or select "New Project" in the FTS menu bar to create a Project. After creating a Project you will be able to add Modules to it. After adding the Modules, you will be able to add Test Cases and Test Steps to the Modules.

Once you have created Projects, Modules and Test Cases/Steps, you will see them listed in the Project List. You can click on an item in the Project list to view that item's details. At first only the Projects will be visible. If a Project has child Modules, there will be three buttons next to it. From left to right, they are:

- Expand All: Expand the entire tree for this Project (so all children are visible).
- Collapse All: Collapse this Project so no children are visible. This function also collapses all children of the Project.
- Expand: Expand this Project (so its child Modules are visible.)

Once expanded, the Expand button is changed to the Collapse button, which collapses the Project so no child Modules are visible. These functions work in the same manner for Modules and Test Cases/Steps as they do for Projects.



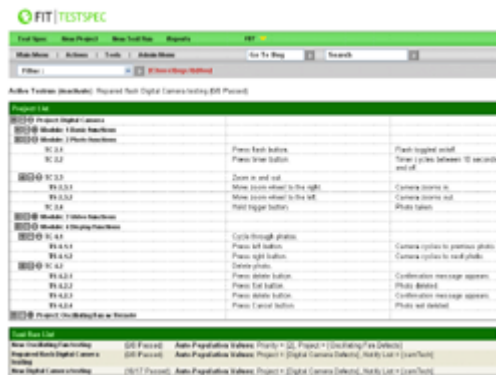
[Screenshot showing the Project List and Test Run List.](#)



# Test Run List

When you first go to the FTS main menu, the Test Run List will be empty. Use the "New Test Run" button, or select "New Test Run" in the FTS menu bar to add a new Test Run. After creating a Test Run, it will be visible in the Test Run List. There are three columns visible:

- **First Column:** Shows the Test Run name. Click on the name to view the details for this Test Run.
- **Second Column:** Shows the number of test cases/steps passed out of the total number of test cases/steps. This string can be configured using the sFTS... string under Admin Menu->Customize Strings (in the General Setup section).
- **Third Column:** Shows the Auto-population values for this Test Run. These values will be automatically set when a bug is created for a test case/step while a test run is activated.



[Screenshot showing the Project List and Test Run List.](#)



[Screenshot showing a customized version of TestSpec.](#)

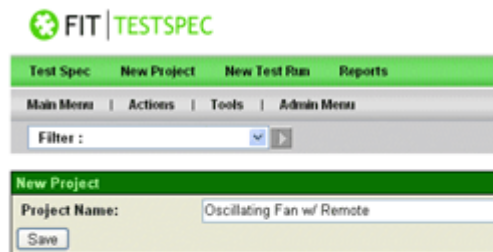
# Projects

To create a new Project, choose New Project from the FTS menu or click the New Project button at the top of the Project List. You will be prompted to enter a name for the Project. After submitting, you will be taken to the Project Details.

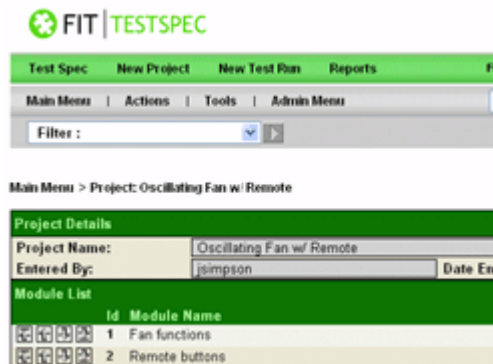
When viewing the Project Details you can view the Project's information, as well as a list of its child Modules. There are also a few options available for the Project:

- Generate Document: this option allows shows you a table containing all of the Project's children and their details. Click here for more information (link).
- Delete Project: after confirmation, this option will remove the Project and its children from the Project list.
- New Module: Create a new child Module for this Project. This option will take you to the New Module page (link).

The Module list allows you to access child Modules and reorder them. Click on the Id number for a child Module to view its details.



[Screenshot showing the New Project screen](#)



[Screenshot showing the Project Details screen.](#)



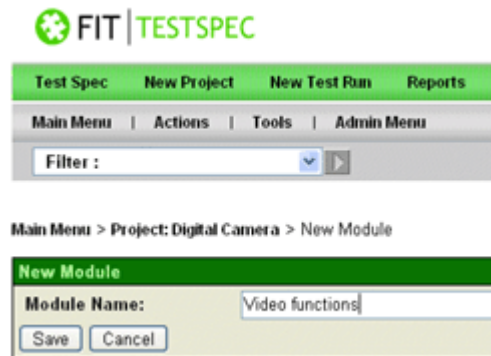
# Modules

To create a new Module, choose an existing Project from the Project List and then choose New Module. You will be prompted to enter a name for the Module. After submitting, you will be taken back to the parent Project's Details, where the new Module will be visible at the bottom of the Module list. Click on a Module's Id number in the Module List to view the Module's details.

When viewing the Module Details, you can view the Module's information and a list of its child Test Cases. There are also a few options available for the Module:

- [Generate Document](#): this option allows shows you a table containing all of the Module's children and their details. Click here for more information (link).
- [View History](#): view the log of changes to this Module.
- [Edit Module](#): by editing a Module, you can change the Module's name.
- [Delete Module](#): after confirmation, this option will remove the Module and its children from the parent Project.
- [Create New Test Case\(s\)](#): Choose a number of Test Cases to create (default is 1) and click the New Test Case(s) button to create 1 or more Test Case(s). This option will take you to the New Test Case page (link).
- [Auto Import Test Cases](#): This option will allow you to create Test Cases from a block of text. Click here for more information (link).

The Test Case list allows you to access child Test Cases and reorder them. Click on the Id number for a child Module to view its details.



[Screenshot showing the New Module screen](#)

The screenshot displays the FIT TESTSPEC web application interface. At the top, there is a navigation bar with the FIT TESTSPEC logo and a menu with options: 'Test Types', 'New Project', 'New Test Plan', 'Reports', and 'FIT'. Below the navigation bar is a breadcrumb trail: 'Main Menu > Admin > Tests > Admin View'. A search bar and a 'Go To Blog' link are also present.

The main content area shows the breadcrumb trail: 'Main Menu > Project Digital Camera > Module 2: Photo Function'. Below this, there is a section titled 'Previous Module Test Module' with a table of test modules. The table has columns for 'Module Name', 'Created By', 'Last Modified By', 'Date Entered', and 'Date Last Modified'. The table contains three rows of data:

Module Name	Created By	Last Modified By	Date Entered	Date Last Modified
Photo Function	System	System	Jun 13 2006 2:11:04	Jun 13 2006 2:11:04
Photo Function	System	System	Jun 13 2006 2:11:04	Jun 13 2006 2:11:04
Photo Function	System	System	Jun 13 2006 2:11:04	Jun 13 2006 2:11:04

Below the table, there is a section titled 'Test Case List' with a table of test cases. The table has columns for 'Test Case ID', 'Test Case Name', and 'Test Case Description'. The table contains three rows of data:

Test Case ID	Test Case Name	Test Case Description
TC-1.1	Press Fast button	Press Fast button
TC-1.2	Press Enter button	Press Enter button
TC-1.3	Press Exit button	Press Exit button

[Screenshot showing the Module Details screen.](#)

## Test Cases/Steps

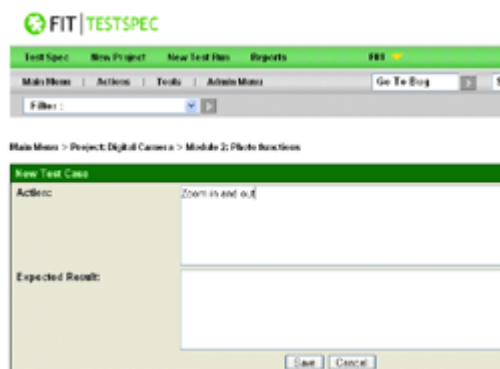
**Note:** The following documentation applies to Test Steps the same as it does to Test Cases. A Test Step is a child of a Test Case or another Test Step, whereas a Test Case is a child of a Module.

To create a new Test Case, choose the desired parent from the Project List and then choose Create New Test Case(s) or Auto Import Test Cases. You will be prompted to enter an Action and Expected Result for the Test Case. After submitting, you will be taken back to the parent's Details, where the new Test Case will be visible at the bottom of the Test Case list. Click on a Test Case's Id number in the Test Case List to view its details.

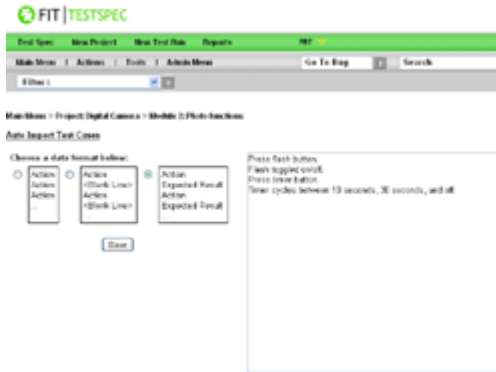
When viewing the Test Case Details you can view the Test Case's information, as well as a list of its child Test Steps. There are also a few options available for the Test Case:

- [Generate Document](#): this option shows you a table containing all of the Test Case's children and their details. Click here for more information (link).
- [View History](#): view the log of changes to this Test Case.
- [Edit Test Case](#): by editing a Test Case, you can change the Test Case's Action and Expected Results fields.
- [Delete Test Case](#): after confirmation, this option will remove the Test Case and its children from the parent Module. Only Administrator users can delete Test Cases.
- [Create New Test Step\(s\)](#): Choose a number of Test Steps to create (default is 1) and click the New Step(s) button to create 1 or more Test Step(s). This option will take you to the New Test Step page (link).
- [Auto Import Test Steps](#): This option will allow you to create Test Steps from a block of text. Click here for more information. (link)

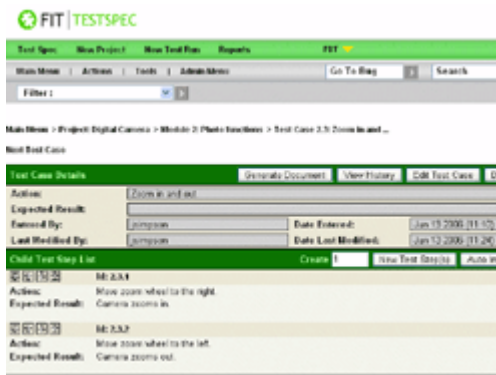
The Test Step list allows you to access child Test Steps and reorder them. Click on the Id number for a child Test Step to view its details.



[Screenshot showing the New Test Case screen](#)



[Screenshot showing the Auto Import Test Case screen](#)



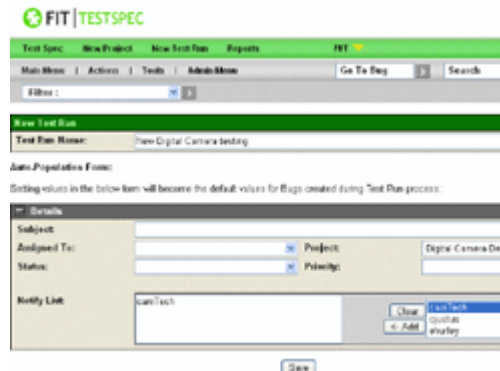
[Screenshot showing the Test Case Details screen.](#)

# Test Runs

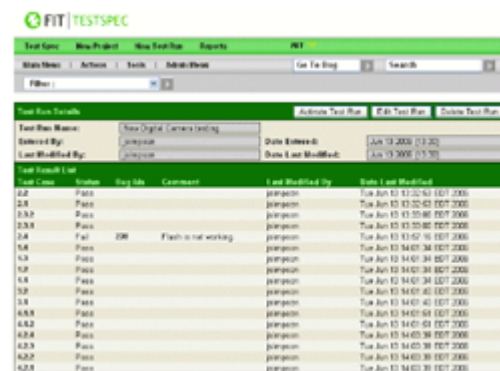
To create a new Test Run, choose New Test Run from the FTS menu or click the New Test Run button at the top of the Test Run List. You will be prompted to enter a name for the Test Run. Below this is the Auto-Population Form. This form models the FIT | BugTrack “New Bug” screen. When a Test Run is activated and a Test Case/Step is given a result, the tester has the option of entering a new bug into the system. A bug created in this manner will be pre-populated with the values from the Auto-Population Form. After submitting, you will be taken to the Test Run Details.

When viewing the Test Run Details you can view the Test Run's information, as well as a list of its Test Results. There are also a few options available for the Test Run:

- Activate Test Run: Once a Test Run is activated, you will be taken back to the FTS main menu, and the currently activated Test Run will be shown under the menu with an option to deactivate it. See below for more information on active Test Runs.
- Edit Test Run: by editing a Test Run, you can change the Module's name, as well as change the values in the Auto-Population Form.
- Delete Test Run: after confirmation, this option will remove the Test Run from the Test Run List.



[Screenshot showing the New Test Run screen](#)



[Screenshot showing the Test Run Details screen.](#)

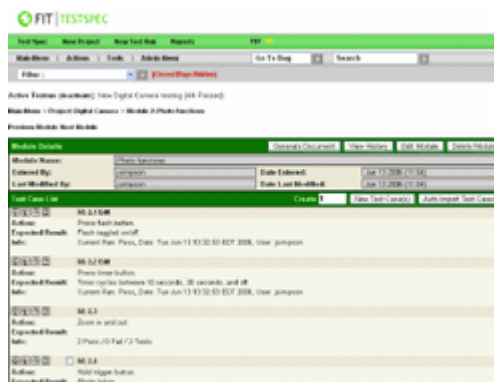
## Working with an Active Test Run

The following applies to Modules, Test Cases and Test Steps.

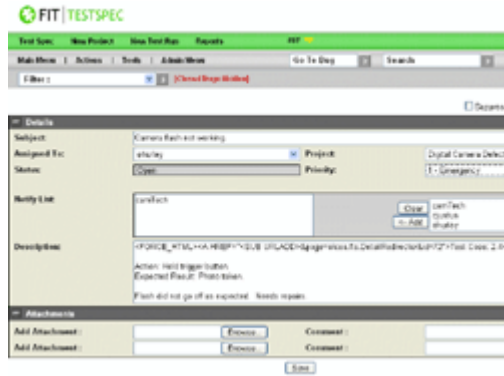
When a Test Run is activated, the user can navigate to any Module, Test Case or Test Step to enter Test Results. When navigating to a Module, the child Test Cases in the Test Case list will be displayed differently depending on certain factors:

1. Child is a leaf: The Test Case will have input fields for Comment and Action, as well as buttons to set the Test Result (the default results are Pass, Fail, Skip and Block). Action can be None, Create Bug, or, if a bug already exists for this Test Case, Update Bug. Choosing New Bug or Update Bug will take the user to New Bug or Edit Bug in FIT | BugTrack, and return them to the TestSpec module afterwards.
2. Child is a leaf, but already has a result: the result, result date, user and comment will be shown for the Test Case. Also, an Edit link will appear that will allow the user to edit the result and comment.
3. Child is not a leaf: a summary of the Test Case's children's results will be shown (default # Pass / # Fail / # Tests).

There is also an Update Selected section to enter many results at once.



[Screenshot showing an active Test Run:  
Creating a bug for a failure during the execution of a Test Case](#)



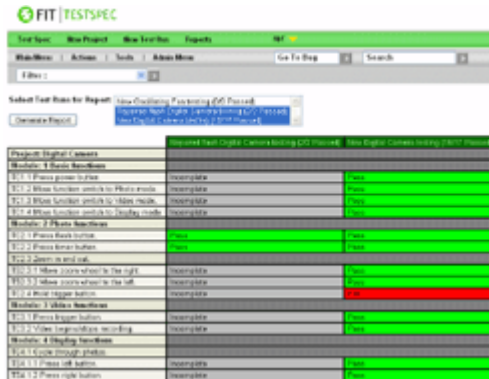
[Screenshot showing an active Test Run:  
Entering the bug information for the failed Test Case](#)



[Screenshot showing an active Test Run:  
After bug is entered, user is returned to their place in the Test Run](#)

# Reports

The Reports page allows the user to select a set of Test Runs to generate a report for. The report will show the results for each Test Case/Step, grouped by the chosen Test Runs. Results are colour coded according to the settings on the Admin Menu->FTS Setup->Test Result Administration page. If no result is available for a given Test Case/Step, it will be given a value of N/A.



[Screenshot showing the Reports screen](#)



# Generate Document

The Generate Document feature is available for any Project, Module, Test Case or Test Step that has children. The document shows a table of all the child Test Cases/Steps, their Actions, Expected Results, and Test result information. The document can be viewed in row or column format.

Test Case	Action	Expected Result	Info	Comments
<b>Module 1: Radio Receiver</b>				
TC 1.1	Press power button	Camera turns on	None	Pass
TC 1.2	Press LockOn switch to Photo mode	Camera is in Photo mode, shutter opens, viewfinder on	None	Pass
TC 1.3	Press LockOn switch to Video mode	Camera is in Movie mode	None	Pass
TC 1.4	Press LockOn switch to Display mode	Camera is in Display mode, shutter is closed, viewfinder shows menu screen photo/video	None	Pass
<b>Module 2: Phone Numbers</b>				
TC 2.1	Press Back button	Phone logged on/off	None	Pass
TC 2.2	Press Home button	Phone cycles between 10 seconds, 30 seconds, and off	None	Pass

[Screenshot showing the Generate Document screen](#)

# Test Result Administration

This screen shows the existing Test Results (the defaults are Pass, Fail, Skip and Block), which can be removed or modified, or new results can be added. To add a result, enter the Result Type and a Report Colour (the result will be shown in this colour on the report screen) and click 'Save'.



[Screenshot showing the Test Result Administration screen](#)